



Medium Chess Puzzle # 0065

By

G Bud Games
<https://gbud.in>

November 6, 2021

Contents

Medium Chess puzzle # 0065 - Mate in 2 moves	3
Medium chess puzzle 0065	3
Solution to medium chess puzzle 0065	4
Solution 1	4
Right moves for the solution to the medium chess puzzle 0065	6
Explanation for the moves	6
Categories of medium chess puzzle 0065	7
How to view the solution to medium chess puzzle 0065	7
How to get help for moves in the medium chess puzzle 0065	8
Play chess for free	9

List of Figures

1	Solve this medium chess puzzle 0065. Mate in 2 moves @ https://gbud.in/gk9m5j2	3
2	Solve this medium chess puzzle online with solution @ https://gbud.in/gk9m5j2	3
3	Initial board position of medium chess puzzle 0065	4
4	Rxh8+ - This sacrifice is to attract or force the opponent's king to come to h8.	5
5	Kxh8 - Opponent's king is forced to capture your rook. This is a zugzwang move. The king can not move to f7 due to the attack from the pawn	5
6	Rh4# - This is called Greco's mate. The king can not move to g8 since the rook movement released the diagonal for the bishop to attack. This is how you can mate in 2 moves	6
7	Click the solution button to view solutions @ https://gbud.in/gk9m5j2	7
8	Click the help button to get help on next move @ https://gbud.in/gk9m5j2	8
9	Solve more medium puzzles @ https://gbud.in/chsmdpz	8
10	Solve other puzzles @ https://gbud.in/chsgppz	8
11	Play chess online for free. Solve puzzles and play with friends	9
12	Solve this puzzle online by scanning this QR code or go to the link below	10

Medium Chess puzzle # 0065 - Mate in 2 moves

Solve this medium chess puzzle and improve your chess games through improvement of your chess strategies and chess tactics.

Puzzle No : 0065

Difficulty level : medium

Description : Mate in 2 moves

Next Move : White

Player level : Intermediate

Short URL for puzzle : <https://gbud.in/gk9m5j2>

Medium chess puzzle 0065

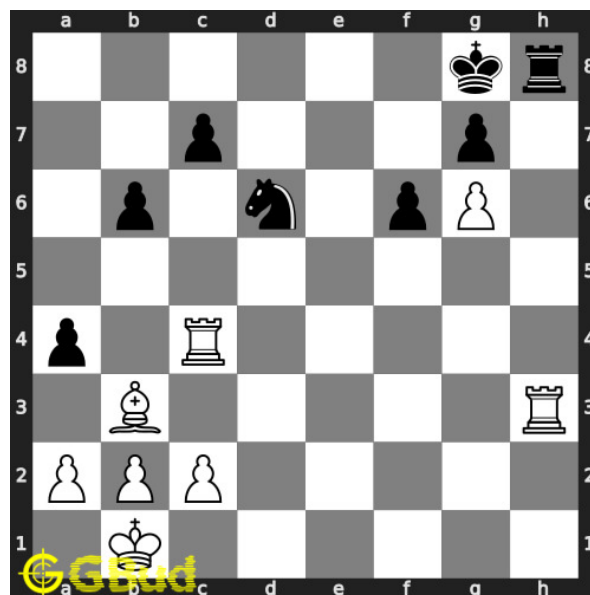


Figure 1: Solve this medium chess puzzle 0065. Mate in 2 moves @ <https://gbud.in/gk9m5j2>



Figure 2: Solve this medium chess puzzle online with solution @ <https://gbud.in/gk9m5j2>

Solution to medium chess puzzle 0065

At this puzzle, next **move** is by **White**. The objective of the puzzle is to mate in 2 moves.

See the interactive solution at the [puzzle page](#)

Solution 1

Initial board position This is the initial board position of medium chess puzzle 0065.

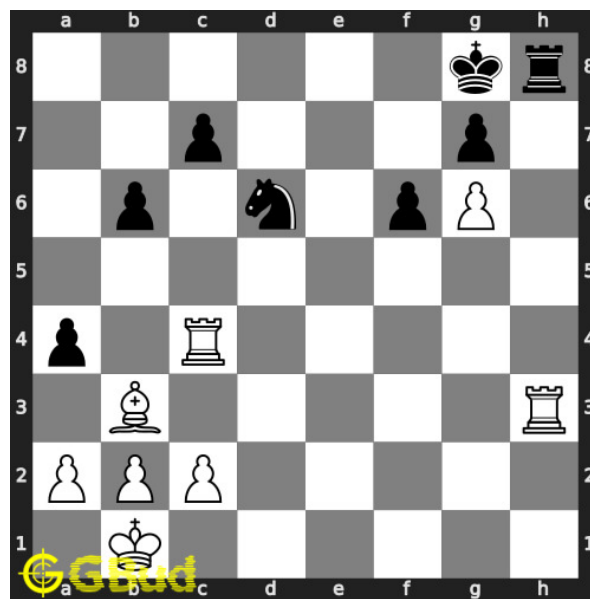


Figure 3: Initial board position of medium chess puzzle 0065

Move 1 Move by white

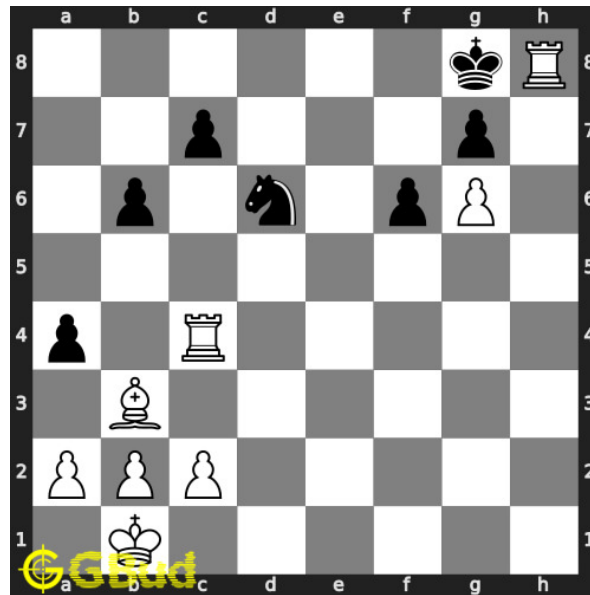


Figure 4: Rxh8+ - This sacrifice is to attract or force the opponent's king to come to h8.

Move 2 Move by black

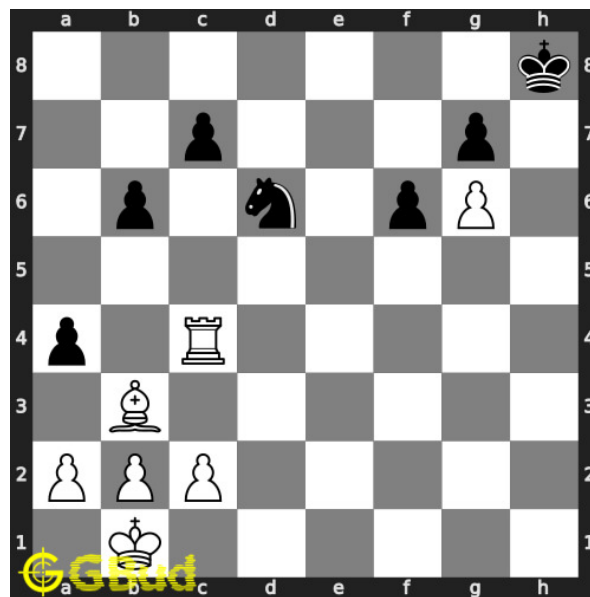


Figure 5: Kxh8 - Opponent's king is forced to capture your rook. This is a zugzwang move. The king can not move to f7 due to the attack from the pawn

Move 3 Move by white

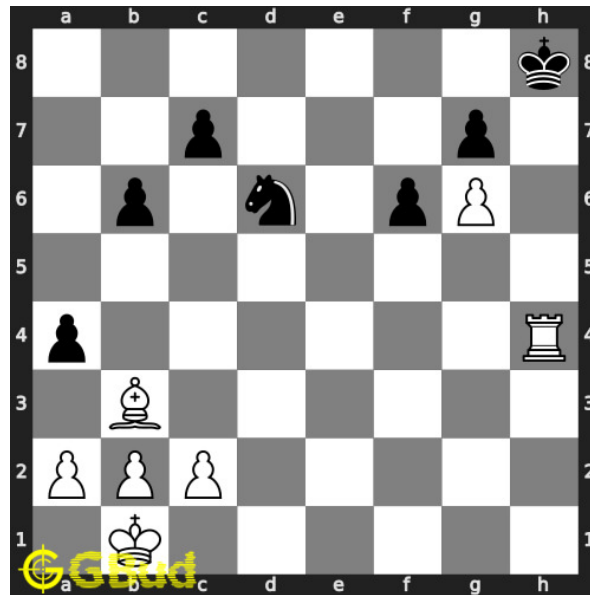


Figure 6: Rh4# - This is called Greco's mate. The king can not move to g8 since the rook movement released the diagonal for the bishop to attack. This is how you can mate in 2 moves

Right moves for the solution to the medium chess puzzle 0065

Based on the objective of the puzzle, you have to make the right moves. Following are the right moves

1. Rxh8+, Rh4#

Explanation for the moves

1. Rxh8+ - This sacrifice is to attract or force the opponent's king to come to h8.
2. Rh4# - This is called Greco's mate. The king can not move to g8 since the rook movement released the diagonal for the bishop to attack. This is how you can mate in 2 moves
3. Kxh8 - Opponent's king is forced to capture your rook. This is a zugzwang move. The king can not move to f7 due to the attack from the pawn
4. For right move - You moved your pieces wisely to have a Greco's mate. Keep it up
5. For wrong move - You could have had a Greco's mate after the sacrifice of the rook. Try again.

Categories of medium chess puzzle 0065

This medium chess puzzle falls in these categories.

1. [Medium chess puzzles](#)
2. [Sacrifice puzzles in chess](#)
3. [Mate in 2 puzzles in chess](#)
4. [Endgame puzzles in chess](#)
5. [Strategy puzzles in chess](#)
6. [Mate pattern puzzles in chess](#)
7. [Zugzwang puzzles in chess](#)
8. [Rook puzzles in chess](#)

How to view the solution to medium chess puzzle 0065

To view the [solution to this puzzle](#), follow the steps given below

1. Go to the [puzzle page](#)
2. Click the solution button (Key as shown [below](#)) to view the solution



Figure 7: Click the solution button to view solutions @ <https://gbud.in/gk9m5j2>

How to get help for moves in the medium chess puzzle 0065

To get help or the possible next moves in the puzzle, , follow the steps given below

1. Go to the [puzzle page](#)
2. Click the help button (exclamation mark as shown [below](#)) to get help or suggestion on next possible [move](#)



Figure 8: Click the help button to get help on next move @ <https://gbud.in/gk9m5j2>



Figure 9: Solve more medium puzzles @ <https://gbud.in/chsmdpz>



Figure 10: Solve other puzzles @ <https://gbud.in/chsgppz>

Play chess for free

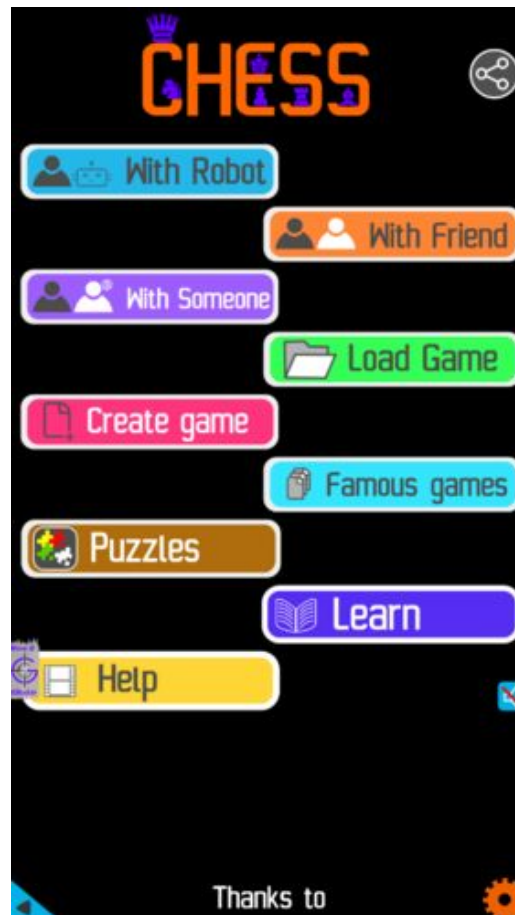


Figure 11: Play chess online for free. Solve puzzles and play with friends

Play chess for free at <https://gbud.in/chs>

We present you a platform to play chess online with friends for free. No need to install any app. You can play chess for free without registration or login.

Simple. You can do several chess related activities.

1. [solve chess puzzles](#)
2. [learn about chess](#)
3. [play chess with computer](#)
4. [play chess with friend](#)
5. [create your own chess games](#)

6. [fen viewer](#)
7. [fen editor](#)
8. [fen generator](#)
9. [pgn viewer](#)
10. [chess board editor](#)
11. [view famous chess games.](#)



Figure 12: Solve this puzzle online by scanning this QR code or go to the link below

<https://gbud.in/gk9m5j2>

Read the latest article on Medium Chess puzzle # 0065 - Mate in 2 moves by scanning this QR code or click the link

Previous article : [« Medium Chess puzzle # 0064 - Mate in 2 moves](#)

Next article : [Medium chess puzzles »](#)

[Back to top](#)

[Contact Us](#)